

DEPARTMENT OF THE AIR FORCE  
HEADQUARTERS, UNITED STATES AIR FORCE  
WASHINGTON

TECHNICAL ORDER  
NO. 01-100LAA-22

30 March 1950

INSTALLATION OF EMERGENCY CANOPY RELEASE - L-17A (RYAN)

This technical order supersedes kit copies of T. O. No. 01-100LAA-22, dated 8 October 1949.

**By whom work will be accomplished:** Organizational maintenance activities, with the aid of field maintenance facilities if necessary.

**When work will be accomplished:** As soon as possible, but not later than the next 25-hour inspection period.

**AF form entry required:** 60A.

1. PURPOSE.

To provide a full travel canopy opening with one continuous pull of the emergency opening device, all L-17A aircraft will be modified in accordance with instructions contained in paragraph 2.

2. MODIFICATION PROCEDURE.

a. Remove right-hand wing to fuselage fairing, rear cabin carpet, and center cabin control cable guard, part No. 145-52402-30, to facilitate accomplishing the instructions contained in paragraphs 2.b. and c.

b. Remove canopy assist cable assembly, part No. 145-31862.

c. Install new assist cable assembly, part No. 145-31867, rerouting as shown in figure 1. Reinstall center

cabin control cable guard, part No. 145-52402-30.

d. Remove canopy by removing rear track stop blocks and assist cable pulley; then slide canopy aft until clear of tracks being careful not to lose canopy rollers.

e. Remove left-hand forward canopy track from fuselage by drilling out attaching rivets and remove doubler from inside of track by drilling through spot welds from doubler side. **CAUTION:** Do not drill through track. Use drill bit sharpened to a very flat angle.

f. Install track doubler, part No. 145-31829-13. Locate doubler 1/8 inch forward of edge of existing hole in track. Use four each rivets, part No. AN427M4-8, equally spaced. Cut slot in track, as shown in figure 2.

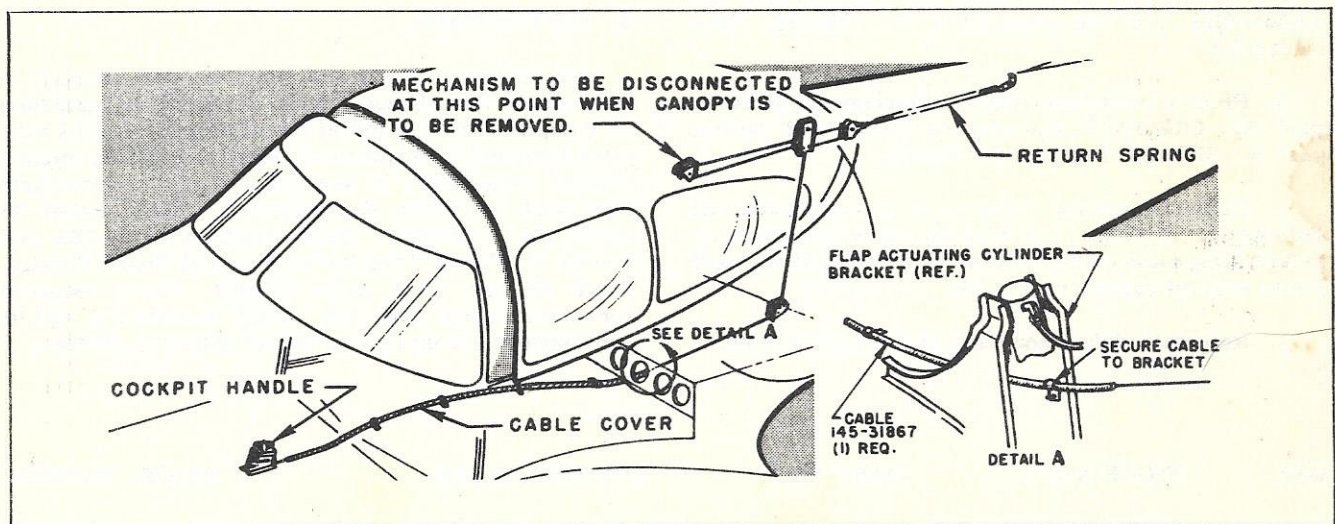


Figure 1

NOTICE: Reproduction for non-military use of the information or illustrations contained in this publication is not permitted without specific approval of the issuing service (BuAer or AMC).



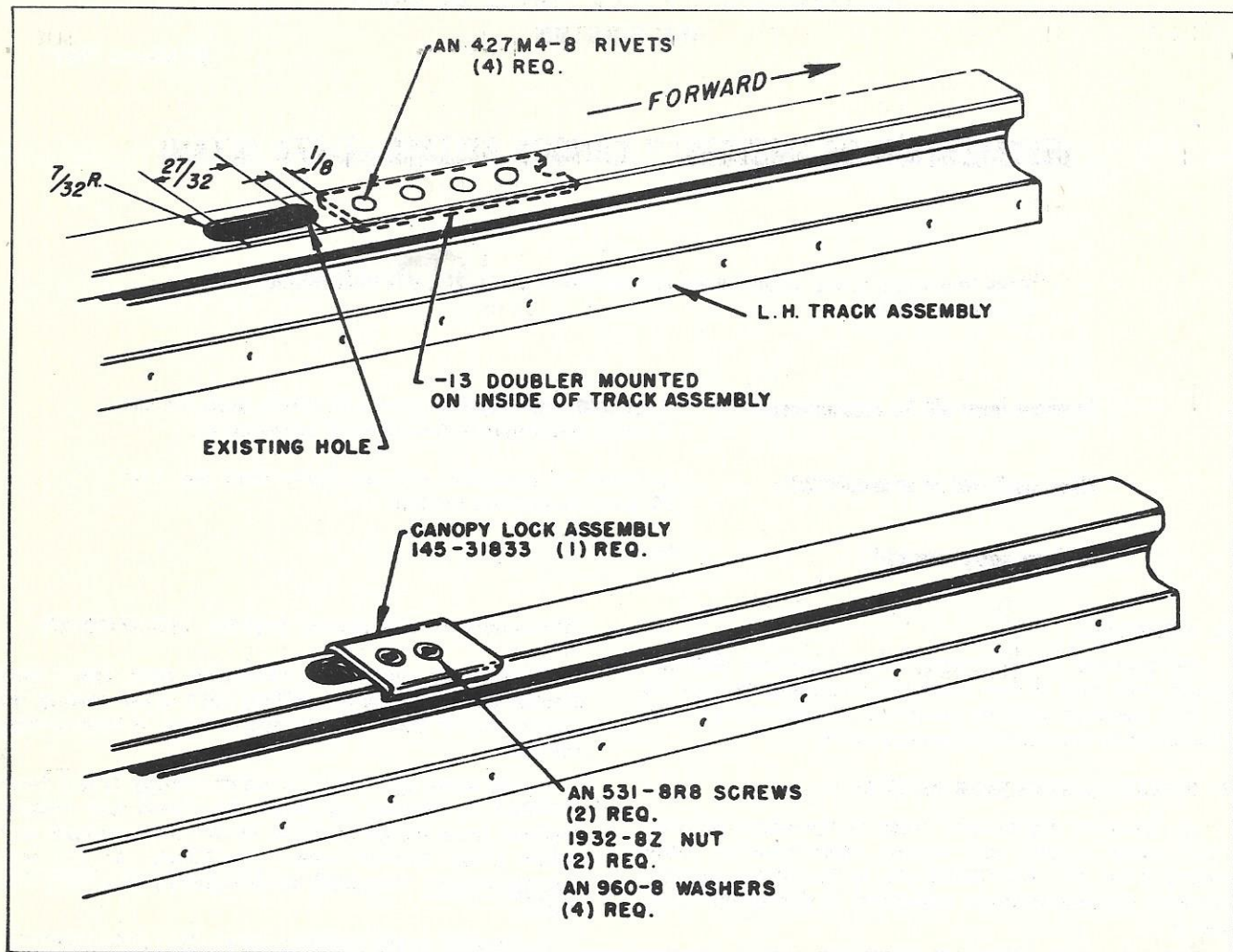


Figure 2

g. Install canopy lock assembly, part No. 145-31833, on left-hand track using two screws, part No. AN531-8R8, and two nuts, part No. 1932-8Z. (See figure 2.)

h. Reinstall left-hand track on fuselage using rivets, part No. 2R1AD5-7 on outboard flange and rivets, part No. 2R1AD4-7 on inboard flange.

i. Reinstall canopy using care to insure that all rollers are in place, and hook up cable assembly by reinstalling cable pulley in bracket provided at forward lower edge of canopy rear deck.

j. Reinstall right-hand wing to fuselage fairing.

k. Reinstall rear cabin carpet.

### 3. SUPPLY DATA.

The following parts are required per aircraft to accomplish this change. These parts will be furnished as complete kits for initial installation in L-17A aircraft assigned to the National Guard and will be shipped without requisition in accordance with instructions contained in letter, Headquarters, USAF, dated 26 April 1949, subject: "Modernization of L-16A and L-17A Airplanes," and letter, National Guard Bureau, dated 28 July 1949, same subject. Parts required for maintenance after the initial installation will be requisitioned from the individual property classes.

QTY	STOCK NO.	PART NO.	NOMENCLATURE	CLASS	SOURCE
1	1300TO-01-100LAA22		KIT, "Installation of Emergency Canopy Release - L-17A," consisting of the following parts: (UNIT COST - \$14.72)	15	AF Stock



QTY	STOCK NO.	PART NO.	NOMENCLATURE	CLASS	SOURCE
1	0110-145-31867	145-31867	Cable Assembly	01-M	
1	0110-145-31829-13	145-31829-13	Track Doubler	01-M	
1	0110-145-31833	145-31833	Canopy Lock Assembly	01-M	
2	6700-747774-6	AN531-8R8	Screw - Sheet metal FH recessed No. 8, 1/2 in. length	29	
2	6500-534760	1932-8Z	Nut - Speed steel U type 100 deg countersunk Tinnerman 1/2 x 19/32 in.	04-A	
4	6500-983900	AN960-8	Washer - Plain steel No. 8 x .032 in.	04-A	
4	6700-568954	AN427M4-8	Rivet - Monel countersunk head 100 deg 1/8 x 1/2 in.	29	
19	0110-2R1AD4-7	2R1AD4-7	Rivet	01-M	
23	0110-2R1AD5-7	2R1AD5-7	Rivet	01-M	

**4. MAN-HOURS REQUIRED.**

Approximately 12 man-hours are required per aircraft to accomplish this installation.

**5. WEIGHT AND BALANCE INFORMATION.**

The weight and balance change resulting from the instructions contained herein is negligible.

**BY ORDER OF THE SECRETARY OF THE AIR FORCE:**

**HOYT S. VANDENBERG**  
Chief of Staff  
United States Air Force

**B. W. CHIDLAW**  
Lieutenant General, USAF  
Commanding General  
Air Materiel Command

Prepared by Maintenance Technical Section,  
Maintenance Div, Hq, AMC.

